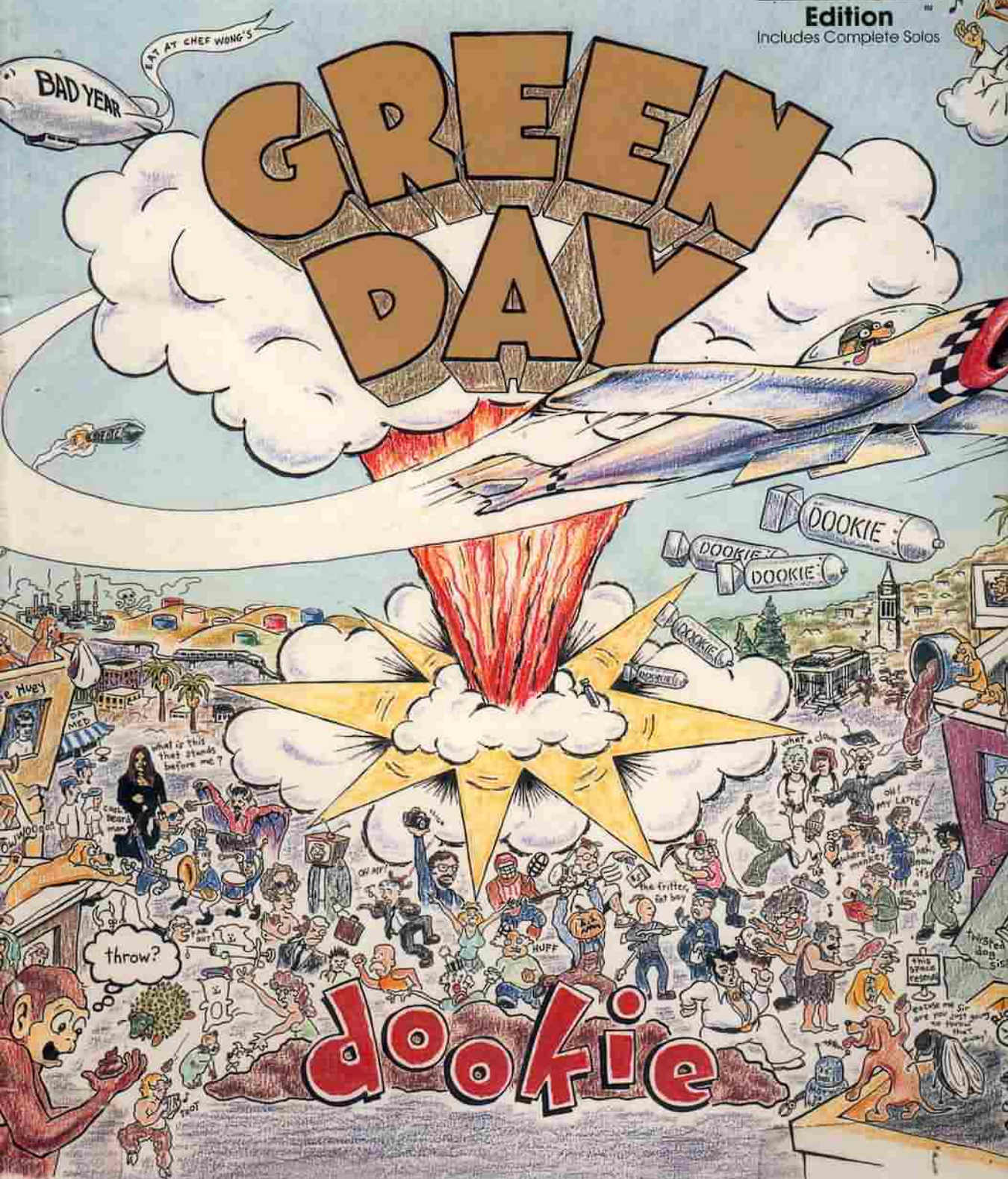


Authentic
GUITAR-TAB
Edition™
Includes Complete Solos



MONTREAL-NORD CBC HENRI-BOURASSA
780.8 GREE D AG L PM



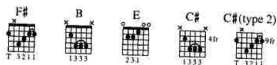
0000006152926

6-152926

BURNOUT

Words by
BILLIE JOE

Music by
BILLIE JOE,
TRÉ COOL and MIKE DIRNT



Verse: Rhy. Fig 1

Fast rock $\text{♩} = 176$
Drums

Gtr. 1

1. I de - clare I don't care — no more. —
2. See additional lyrics

I'm burn - ing up and out — and — grow - ing bored. — In my smoked

out bor - ing — room. My — (end Rhy. Fig. 1)

w/Rhy. Fig. 1 (Gtr. 1)

hair is shag - ging in — my eyes. — Drag - ging my feet to hit — the street — to - night —

— to drive a - long — these shit — town — lights.

Chorus: B

Gtr. 1

I'm not grow - ing — up. I'm — just burn - ing —

out and I stepped in line — to walk — a - mongst — the

dead. Oh _____

I'm not grow-ing up, I'm just burn-ing

out and I stepped in line to walk a-mongst the

dead. Dead. _____

To Coda ⊕
C#sus C#(type 2)

*Dead. _____

*First time only.

Drum Solo: *D.S. \mathcal{S}*
(take 2nd ending)
at Coda

Gtr. 1 F# E F# 1.2.3. || 4.

T	2	2	2	0	2
A	4	4	4	0	4
B	x	x	x	x	x
B	2	2	2	0	2

⊕ Coda Gtr. 1 F# E F#

T	2	2	0	2
A	4	4	0	4
B	x	x	x	x
B	2	2	0	2

Verse 2:
Apathy has rained on me.
Now, I'm feeling like a soggy dream.
So close to drowning, but I don't mind.
I've lived inside this mental cave.
Throw my emotions in the grave.
Hell, who needs them anyway?
(To Chorus:)

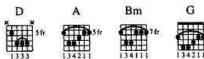
HAVING A BLAST

Words by
BILLIE JOE

Music by
BILLIE JOE,
TRÉ COOL and MIKE DIRNT

All gtrs. tune down 1/2 step:

- ⑥ = E♭ ③ = G♭
⑤ = A♭ ② = B♭
④ = D♭ ① = E♭



Fast rock ♩ = 176

Intro: *f* Gtr. 1 A G

Play 4 times
1/4
(last time) 7 1/4

TAB

Verse:

A5

1. tak - ing _____ all ____ you down _ with me. _
2. See additional lyrics

Rhy. Fig 1

P.M.

TAB

F#m G

Ex - plo-sives duct _ taped to ____ my spine, _

TAB

noth - ing's gon - na change my mind. I won't

(end Rhy. Fig. 1)

TAB

w/Rhy. Fig. 1 (Gr. 1)

AS

lis - ten to an - y - one's last words...

F#m G

There's noth - ing left for you to say.

E

Soon you'll be dead an - y way. Well,

Rhy. Fig. 2

Chorus: D A

Gr. 1

no one here is get - ting out a - live.

Bm

This time I've real - ly lost my mind

G

(end Rhy. Fig. 2)

and I don't care. So

w/Rhy. Fig. 2 (Gr. 1)



close — your — eyes and kiss your — self good - bye —



and think a - bout — the times — you've spent —

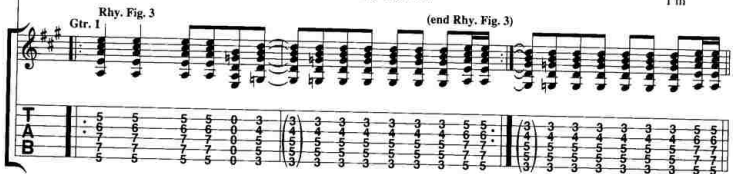


— and what — they've meant. — To me it's



noth - ing: To me it's I'm

**To Coda* *D.S. al Coda*



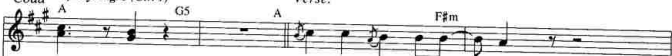
Gr. 1 (end Rhy. Fig. 3)

TAB

*Third time on D.S.



Coda w/Rhy. Fig. 3 (Gr. 1)



noth - ing. 3. Do you ev - er think — back



Gr. 1

TAB

Bm E5 E A F#m

to an - oth - er time? Does it bring you so -

hold - - - - -

TAB

D5 A5 E5 N.C.

down that you thought you lost your mind?

pick, st.

TAB

Verse:

F#m D A

Do you ev - er want to lead a long -

Rhy. Fig. 4

TAB

F#m G

trail of de - struc - tion and now down an - y bull -

TAB

Words by
BILLIE JOE

CHUMP

Music by
BILLIE JOE,
TRÉ COOL and MIKE DIRNT

All gtrs. tune down 1/2 step:

⑥ = E♭ ③ = G♭

⑤ = A♭ ② = B♭

④ = D♭ ① = E♭



Intro: Fast rock ♩ = 176

B A N.C. E B

Rhy. Fig. 1

Gtr. 1

f

let ring

TAB

A N.C. E B

let ring

TAB

Verse: w/Rhy. Fig. 1 (Gtr. 1, 2 times)

B A N.C. E B A N.C. E

don't know _ you, but I think _ I hate _ _ _ you. _

2. See additional lyrics

B A N.C. E F#

You're _ the rea - son for _ _ my mis - er - y. _

Rhy. Fig. 2

Gtr. 1

hold

TAB

w/Rhy. Fig. 1 (Gtr. 1, 2 times) N.C. B A N.C. E

Strange how you've be - come.

(end Rhy. Fig. 2)

TAB

2	2	2	2	2	2	2	2	2	2	2	2	2	2	2	2	0
4	4	4	4	4	4	4	4	4	4	4	4	4	4	4	4	0
2	2	2	2	2	2	2	2	2	2	2	2	2	2	2	2	0

my big - gest en - e - my and

w/Rhy. Fig. 2 (Gtr. 1)

I've nev - er ev - en seen your face.

Chorus: Rhy. Fig. 3 (end Rhy. Fig. 3)

N.C. A E B A

Gtr. 1

Well, may - be it's just jeal - ous - y mix - ing

w/Rhy. Fig. 3 (Gtr. 1, 2 times)

up with a vio - lent mind. A cir - cum - stance that does - n't make

A E B N.C. E

Gtr. 1

much sense, or may - be I'm just dumb.

B A N.C. E 1. B 2.

2. You're I'm a chump.

w/Rhy. Fig. 1 (Gtr. 1) A N.C. E B w/Rhy. Fig. 2 (1st 2 bars only) A N.C. E F#

Outro:

Rhy. Fig. 4

E F# E F#

TAB

w/Rhy. Fig. 4 simile (Gtr. 1)

Play 11 times

Gtr. 2 f

TAB

(Gtr. 2 to slashes)

Both Gtrs. f F# F#5

TAB

Gtr. 2 f F#5 Gtr. 1

rit. rit.

TAB

Verse 2:

You're the cloud hanging out over my head.
 Hail comes crashing down, wetting my face.
 Magic man, egocentric plastic man.
 Yet you still got one over on me.

LONGVIEW

All gtrs. tune down 1/2 step:

⑥ = E♭ ③ = G♭

⑤ = A♭ ② = B♭

④ = D♭ ① = E♭

Words by
BILLIE JOE

Music by
BILLIE JOE,
TRÉ COOL and MIKE DIRNT

Intro: Moderately fast shuffle ♩ = 140 (♩ = ♩♩)

Verse:
**N.C.(E)

*Gtr. 1 $\overset{F\#5}{mf}$ (Gtr. 1 out) (Drums and Bass) 12

*Sustained from end of previous track.

1. I sit a - round...
2. 3. See additional lyrics

** Chords implied by bass.

(D) (E) (D)

and watch the tube, but noth - ing's on.

(E) (D) (E)

I change the chan - nels for an hour or two,

*Secondary vocal tacet first time.

(D) (E) (D)

twid - dle my thumbs just for a bit.

(E) (D) (E)

I'm sick of all the same old shit; in a house.

(D) (E) D

with un - locked doors, and I'm fuck - ing la - zy.

To Coda ⊕

*Gtr. 1 f

T
A
B

*Two gtrs. arranged for one.

Bridge:

2. E D E

I got no mo - ti - va - tion.

Rhy. Fig. 1 (end Rhy. Fig. 1)

The bridge section features a vocal line with the lyrics "I got no mo - ti - va - tion." and a guitar rhythm figure labeled "Rhy. Fig. 1". The guitar tablature shows a sequence of chords: E, D, E, with various fretting patterns for the strings.

w/Rhy. Fig. 1 (Gtr. 1, 3 times) D E D

Where is my mo - ti - va - tion? No time for a

mo - ti - va - tion. Smok - ing my in - spi - ra -

B5 A5 E5 Play 3 times B5

tion.

Gtr. 1

The bridge continues with the vocal line: "Where is my mo - ti - va - tion? No time for a mo - ti - va - tion. Smok - ing my in - spi - ra - tion." The guitar part includes a rhythm figure and a section labeled "Gtr. 1" with triplets. The tablature shows chords B5, A5, E5, and B5, with a "Play 3 times" instruction.

*Vocal first time only.

A5 D# E N.C.(E)

D.S. al Coda (D)

The final part of the bridge shows guitar tablature for chords A5, D#, and E, followed by a "N.C.(E)" instruction. The section ends with a double bar line and a repeat sign, labeled "D.S. al Coda (D)".



Coda

Chorus 3 and 4:

E5 A5 B5 A5 E5
 Sing. 3. Bite my lip ___ and close ___ my ___
 4. See additional lyrics (end Rhy. Fig. 2)
 Gtr. 1 3 3 3 3 Rhy. Fig. 2

w/Rhy. Fig. 2 (Gtr. 1, 3 times)

B5 A5 E5 B5
 eyes. Take me a - way ___ to par - a - dise. ___ I'm so damn bored.

A5 E5 B5 1. A5 E5 B5
 ___ I'm go - ing ___ blind and ___ lone - li - ness ___ has to ___ suf - fice.

1. A5

Gtr. 1

3

Outro: N.C.(E)

(D)

(E)

(D)

Harm.

fingerstyle
hold - 4

hold - 4

Harm.

9 10 10 7 (7) 9 10 12 12 12
 9 9 7 9 9 9 9 9

(E) (D) (E) (D) Harm.

hold - 4 hold - 4

T (12) 9 10 10 7 (7) 9 10 12 (12) 12
A 9 9 7
B

(E) (D) (E) (D) Harm.

hold - 4 hold - 4

T (12) 9 10 10 7 (7) 9 10 12 (12) 12
A 9 9 7
B

(E) (D) (E) (D) Harm.

hold - 4 hold - 4

T (12) 9 10 10 7 (7) 9 10 12 (12) 12
A 9 9 7
B

Repeat and fade

Verse 2:

Peel me off this velcro seat and get me moving.
I sure as hell can't do it by myself.
I'm feeling like a dog in heat
Barred indoors from the summer street.
I locked the door to my own cell
And I lost the key.

Verse 3:

I sit around and watch the phone but no one's calling.
Call me pathetic, call me what you will.
My mother says to get a job,
But she don't like the one she's got.
When masturbation's lost its fun
You're fucking lonely.

Chorus 4:

Bit my lip and close my eyes.
Slipping away to paradise.
Some say quit or I'll go blind,
But it's just a myth.

WELCOME TO PARADISE

Words by
BILLIE JOE

Music by
BILLIE JOE,
TRÉ COOL and MIKE DIRNT

All gtrs. tune down 1/2 step:

⑥ = E♭ ③ = G♭

⑤ = A♭ ② = B♭

④ = D♭ ① = E♭



Fast rock $\text{♩} = 176$

Intro: Rhy. Fig. 1

Gtrs. 1 and 2 E^5 D^5 A^5 *Play 4 times*

Verse:

E^5 D^5

1. Dear moth - er, can you hear me
2. 3. See additional lyrics

Rhy. Fig. 2

E^5 D^5

whin - ing? It's been three whole...

— weeks since that I have left your home. —

(end Rhy. Fig. 2)

TAB (7/7) 7 7 7 7 7 7 5 5 5 5 4 (4) 4 4 4 4 4 4 4 4 0 0

w/Rhy. Fig. 2 (Gtrs. 1 and 2)

This sud - den fear — has left — me trem - bling

'cause now it seems — that I — am out here on my own — and I'm

feel - ing so a - lone. —

Gtrs. 1 and 2

TAB 5 5 5 5 4 (4) 4 4 4 4 4 4 4 4 4 4 4 4 4 4 4 4 0 0

Chorus:

Pay at - ten - tion to — the cracked — streets and —

(Aaa)

Rhy. Fig. 3

TAB 1 1 1 1 4 (4) 4 4 4 4 4 4 4 4 0 0

A5 C E G

the bro - ken homes.) Some call it slums,

(end Rhy. Fig. 3)

TAB

B5

— some call it nice. I

TAB

w/Rhy. Fig. 3 (Gtrs. 1 and 2)

E G A5 C5

want to take you through a waste - land I like to call my home..

(Aaa..)

Gtrs. 1 and 2 E B To Coda ⊕

Wel - come to

w/Rhy. Fig. 1 (Gtrs. 1 and 2, 2 times)

E5 D5 A5 E5 D5 A5

par - a - dise. _____

Gtrs. 1 and 2

E5 D5 A5 E5 D5 A5

T 9 9 9 9 9 0 7 7 0 7 7 9 9 9 9 0 7 7 0 0
 A 9 11 9 9 9 0 7 7 0 7 7 9 9 9 9 0 7 7 0 0
 B 7 7 7 7 7 0 5 5 0 5 5 7 7 7 7 0 5 5 0 0

Interlude:

E

T 1 1 1 1 1 1 1 1
 A 2 2 2 2 2 2 2 2
 B 0 0 0 0 0 0 0 0

w/feedback

Both Gtrs. ad lib.
until indicated otherwise.

8 *Gtr. 2 E G F# F Play 4 times

mf P.M. ---4 P.M. ---4 P.M. ---4 P.M. ---4

T . 9 12 11 10
 A . 9 9 10 12 12 9 11 11 8 10 10*
 B 7 9 9 10 12 12 9 11 11 8 10 10*

*Gtr. 1 continues ad lib.

Both Gtrs.

E G F# F

P.M. ---4 P.M. ---4 P.M. ---4 P.M. ---4

T . 9 12 11 10
 A . 9 9 10 12 12 9 11 11 8 10 10*
 B 7 9 9 10 12 12 9 11 11 8 10 10*

E G F# F

P.M. ---4 P.M. ---4 P.M. ---4 P.M. ---4 P.M. ---4

T . 9 12 11 10
 A . 9 0 0 10 12 0 0 9 11 0 0 8 10 0 0
 B 7 9 0 0 10 12 0 0 9 11 0 0 8 10 0 0

E G F# F

f

T
A
B

9 12 11 10

7 9 0 0 10 12 0 0 9 11 11 0 0 8 10 0 0

E G F# F E

ff

*D.S. $\frac{3}{4}$ at Coda

T
A
B

9 9 9 12 12 12 12 12 11 11 11 11 11 10 10 10 10 10 9 9

7 7 7 10 10 10 10 10 9 9 9 9 9 8 8 8 8 8 7 7

*Second time only.



Coda

w/Rhy. Fig. 1 (Gtrs. 1 and 2, 4 times)

par - a - dise. _____ Oh _____

par - a - dise. _____

Gtrs. 1 and 2 E5

T
A
B

Verse 2:

A gunshot rings out at the station,
 Another urchin snaps and left dead on his own.
 It makes me wonder why I'm still here.
 For some strange reason it's now feeling like my home
 And I'm never gonna go.
 (To Chorus:)

Verse 3:

Dear mother, can you hear me laughing?
 It's been six whole months since I have left your home.
 It makes me wonder why I'm still here.
 For some strange reason it's now feeling like my home
 And I'm never gonna go.
 (To Chorus:)

PULLING TEETH

All gtrs. tune down 1/2 step:

⑥ = E♭ ③ = G♭

⑤ = A♭ ② = B♭

④ = D♭ ① = E♭

Words by
BILLIE JOE

Music by
BILLIE JOE,

TRÉ COOL and MIKE DIRNT

Moderate rock ♩ = 126

Intro: B5

Gtr. 1

f *hold* -----

T	4	4	4	4	4	4	4	4	4	4	4	4	4	4	4	4	4	4	4	4	5	5	5
A	4	4	4	4	4	4	4	4	4	4	4	4	4	4	4	4	4	4	4	4	4	4	4
B	2	2	2	2	2	2	2	2	2	2	2	2	0	0	0	0	0	0	0	0	0	0	0

Gtr. 2

mf

T					11								9	9	9
A					x								x	x	x
B					9								7	7	7

Rhy. Fig. 1

B5 B B5/A B/A Bsus/A B5

hold -----

T	4	4	4	4	4	4	4	4	4	4	4	4	4	4	4	4	4	4	4	4	4	4	4	4	4
A	4	4	4	4	4	4	4	4	4	4	4	4	4	4	4	4	4	4	4	4	4	4	4	4	4
B	2	2	2	2	2	2	2	2	2	2	2	2	0	0	0	0	0	0	0	0	4	4	4	4	0

Rhy. Fig. 1A

(Gtr. 2 out)

mf

T					8								6	6	6	6	6	6	6	6	6
A					x								x	x	x	x	x	x	x	x	x
B					6								6	6	6	6	6	6	6	6	6

Verse:

E A Asus2 E B

1. I'm all bust-ed up, bro-ken bones and nas-ty cuts.

Rhy. Fig. 2

Gr. 1

TAB

E A Asus2

Ac - ci - dents will hap - pen, but this time.

TAB

E B E

I can't get up. She comes to check on me,

(end Rhy. Fig. 2)

w/Rhy. Fig. 2 (Gr. 1)

TAB

Asus2 E B

mak - ing sure I'm on my knees. Af - ter

E A Asus2 E B E

all she's the one who put me in this state.

♩ Chorus:
w/Fill I (2nd time)
C#m

Is she ul - tra vio - lent? Is she dis - turbed? I bet - ter

Gtr. 1

*P.M. ---4 hold *P.M. ---4 *P.M. ---4 *P.M. ---4

TAB

*Slight P.M.

tel - her that I love her be - fore she does it all

E C#m

*P.M. -4 hold *P.M. -4

TAB

*Slight P.M.

To Coda

o - ver a - gain. Oh God, she's kill - ing me.

B

*P.M. -4 (hold) *P.M. -4

TAB

Fill I (end of solo)

(Gtr. 2 out)

Harm. ---4

Harm. ---1

TAB

(12) 12 12 12 (12) 12 12 12

Verse:

w/Rhy. Fig. 2 (Gtr. 1)

2. For now I'll lie a - round. Hell, that's all
I can real - ly do. She takes good care of me,
just keep say - ing my love is true.

Gtr. 2
f

7 0

Guitar Solo:

w/Rhy. Fig. 1 (Gtr. 1)

E A Asus2 E B

TAB

0 2 0 0 0 0 (0 2) 0 2 1 2 0 2 1 0 0 0 0 0 0 0 0 0 0 2 0 0 0 2 4 4

1 1 2 2 1 2 2 1 0 0 0 0 1 1 2 4 4

E A

TAB

(4) 5 5 5 7 7 7 5 4 0 0 0 0 0 0 0 0 0 0 0 0 0 0 0 0

12 12 10 10 9 9 10 10 10 9 7 7 5 5 0 (0) 0 12 12 12 12

let ring ----- 4 Harm. (cont. in Fill 1)

D.S. al Coda



Coda

w/Rhy. Fig's. 1 and 1A (Gtrs. 1 and 2, 2 times)

B5 B B5/A B/A Bsus/A B5 B B5/A B/A Bsus/A

kill ing me.

Bridge:

w/Rhy. Fig's. 1 and 1A (Gtrs. 1 and 2, 3½ times)

B5 B B5/A B/A Bsus/A B5 B B5/A B/A Bsus/A

Look - ing out my win - dow for some - one that's pass - ing by.

B5 B

B5/A B/A

Bsus/A

B5 B

B5 (Gtr. 2 out)

Gtrs. 1 and 2

No one knows I'm locked in here. All I do is cry.

Verse:

w/Rhy. Fig. 1 (Gtr. 1, 1st 6 bars only)

E A Asus2 E B

2. For now I'll lie a - round. Hell, that's all I can real - ly do.

E A Asus2 rit.

She takes good care of me, just keep say -

(rit.)

E B A B E

ing my love is true.

Gtr. 1

(rit.)

TAB

0	4	0	4	0
0	4	0	4	0
2	4	0	4	2
2	4	0	4	2
0	2	0	2	0

BASKET CASE

All gtrs. tune down ½ step:

⑥ = E♭ ③ = G♭

⑤ = A♭ ② = B♭

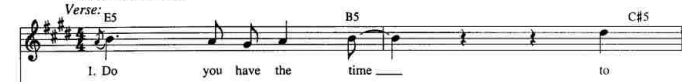
④ = D♭ ① = E♭

Fast rock ♩ = 168

Words by
BILLIE JOE

Music by
BILLIE JOE,
TRÉ COOL and MIKE DIRNT

Verse:



Rhy. Fig. 1



Chorus:



*Gr. 1

Rhy. Fig. 2

P.M.-4 P.M.-4-4 P.M. P.M.-4 P.M.-4-4 P.M.-4-4-4 P.M.-4-4-4 P.M.-4 P.M.-4-4 P.M.

TAB

	7	7	7	7	7	7	9	9	9	9	9	9	9	9	9	9	9	9	9
A	5	5	5	5	5	5	7	7	7	7	7	7	7	7	7	7	7	7	7
B	5	5	5	5	5	5	7	7	7	7	7	7	7	7	7	7	7	7	7

*Doubled by Gr. 2 second time.



Gtrs. 1 and 2 Rhy. Fig. 3

f P.M.-4-4-4

TAB

	9	7	7	x	5	(5)	5	5	5	5	5	5	5	7	7	7	7	7	9
A	9	7	7	x	6	(6)	6	6	6	6	6	6	6	7	7	7	7	7	9
B	7	5	5	x	4	(4)	4	4	4	4	4	4	4	5	5	5	5	5	9

To Coda

E5

Gtr. 1

E5

C#m
(Gtr. 1 out)

B

E

Am 1 just stoned? _

(Gtr. 1 to slashes)
(end Rhy. Fig. 3)

Rhy. Fig. 4

Gtr. 2

B

C#m

2. I

Verse:

E

B

Gtrs. 1
and 2 Rhy. Fig. 5

went

to

a

shrink

to

C#m

G#5

Asus2

A

E

an - a - lyze my dreams. _ She says it's lack of sex.

let ring - - - - - 1

let ring - -

— that's bring - ing me down. B Bsus B Bsus B Bsus

1
(end Rhy. Fig. 5)

TAB: 0 0 0 0 | x x x x | 4 4 4 4 5 2 | (2) 5 5 4 4 4 5 0 | 2 2 2 2 2 2 | 2 2 2 2 2 2

w/Rhy. Fig. 5 (Gtrs. 1 and 2)

went to a whore, He said my life's a bore. So

E B C#m G#5 Asus2

quit my whin-ing 'cause it's bring - ing her down. A E B Bsus B Bsus B Bsus

TAB: 7 7 7 7 0 0 | (9) 9 9 9 9 9 0 | 7 7 7 7 7 0 0

Chorus:

Some - times I give my - self the

A5 B5

Gtrs. 1 and 2
Rhy. Fig. 6

TAB: 7 7 7 7 0 0 | (9) 9 9 9 9 9 0 | 7 7 7 7 7 0 0

creeps. E5 Esus E Esus2

(end Rhy. Fig. 6)

TAB: 9 9 9 9 10 9 0 | (9) 7 7 7 7 7 0 | 7 7 7 7 7 0 0

Instrumental Verse:

w/Rhy. Fig. 5 (Gtrs. 1 and 2, 2 times)

D.S. al Coda

14

on.

\oplus Coda

Gtrs. 1 and 2

hold 4

hold 4

*Vocal first time only.

A5 E5 B5

Play 3 times

E C#m A5/E A5 E5 B5

hold 4

hold 4

A5 E5 B5

steady gliss.

16

SHE

Words by
BILLIE JOE

Music by
BILLIE JOE,
TRÉ COOL and MIKE DIRNT

All gtrs. tune down ½ step:

- ⑥ = E♭ ③ = G♭
 ⑤ = A♭ ② = B♭
 ④ = D♭ ① = E♭

*G



D



C



*Entire chord is fingered, but only the lower strings are strummed. Notes in parentheses are only occasionally heard.

Moderately fast ♩ = 178

Intro: Gtr. 1 (Bass arranged for gtr.)
N.C.(G5)

f

The Intro section consists of a treble clef staff with a melody and a bass staff with fret numbers. The melody starts with a quarter note G4, followed by eighth notes A4, B4, C5, B4, A4, G4. The bass staff shows fret numbers: 5, 5, 5, 5, 5, 5, (5), 5, 5, 5, 5, 5.

Verse: G5

*Gtr. 1

P.M. D P.M.

1. She, — she screams in si - lence.
 2. See additional lyrics

The Verse section consists of a treble clef staff with a melody and a bass staff with fret numbers. The melody starts with a quarter note G4, followed by eighth notes A4, B4, C5, B4, A4, G4. The bass staff shows fret numbers: 5, 5, 5, 5, 5, 5, (5), 5, 5, 5, 5, 7, 5, 5, 5, 5, 5.

*Gtr. 1 (Tacet 1st 14 bars, Verse 1)

P.M. C

A sul - len ri - ot pen - e - trat -

The Verse section continues with a treble clef staff and a bass staff. The melody starts with a quarter note G4, followed by eighth notes A4, B4, C5, B4, A4, G4. The bass staff shows fret numbers: (5), 5, 5, 5, 5, 5, 0, 3, 3, 3, 3, 3.

G5 C G5

P.M. P.M. P.M. P.M. P.M. P.M. P.M.

ing through her mind. Wait

T
A
B (3) 3 3 3 3 3 3 5 5 5 5 5 5 (5) 5 5 5 5 5

D

P.M. P.M. P.M. P.M. P.M. P.M.

ing for a sign

T
A
B 5 5 5 5 5 5 (5) 5 5 5 5 5 7 5 5 5 5 5

C

P.M. P.M. P.M.

to smash the si - lence with the brick

T
A
B (5) 5 5 5 5 5 5 0 3 3 3 3 3 3

Substitute w/Rhy. Fill 1 (Gtr. 1, Verse 2)

G5

Gr. 1

P.M. ----- J

— of self — con — trol. — Are —

T
A
B 3 5 3 3 5 3 3

§ Chorus:

D B C G5

— you locked up in — a world — that's been — planned out for you? —

— Are — you feel - ing like — a so - cial tool —

C G5 C

— with - out a use? — Scream — at —

Rhy. Fill 1

Gtr. 1

C G

T
A
B 4 4 4 4 4 4 4 4 4 4 4 4 4 4 4 4

me un - til my ears bleed. I'm

tak - ing heed just for you.

To Coda ⊕

1. D

2. D

Yeah!

Bridge: G5 D

C

G5 C G5 1. 2. *D.S. al Coda*

⊕ *Coda*

D G5

Are _

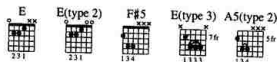
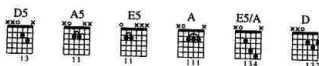
Verse 2:

She, she's figured out all her doubts
 Were someone else's point of view.
 Waking up this time to smash
 The silence with the brick of self-control.
 (To Chorus:)

SASSAFRAS ROOTS

Words by
BILLIE JOE

Music by
BILLIE JOE,
TRÉ COOL and MIKE DIRNT



All gtrs. tune down 1/2 step:

⑥ = E♭ ③ = G♭

⑤ = A♭ ② = B♭

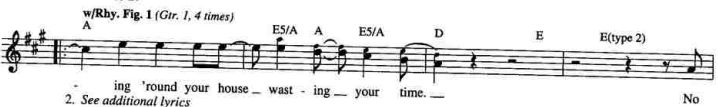
④ = D♭ ① = E♭

Intro: Fast ♩ = 180



1. Roam-

Verses 1 & 2:



2. See additional lyrics



A ES/A A ES/A D E E(type 2)

why are you a lone — wast - ing — your time, — when

A ES/A A ES/A D E E(type 2)

you can be with me — wast - ing — your time? — Well, I'm

Rhy. Fig. 2

D E E(type 2) D E

— a waste like you, — with noth - ing else to do. —

E(type 2) D5 A5 E5 P.M. --

— May I waste your — time too?

(end Rhy. Fig. 2) w/Rhy. Fig. 1 (Gr. 1, 2 times)

E(type 2) E5 E(type 2) A ES/A A ES/A D E E(type 2)

P.M. --

A ES/A A ES/A D E 1. E(type 2) 2. E(type 2)

Bridge:

F#5 D F#5 D

2. Ward -

F#5 D F#5 D

F#5 D E(type 3)

Verse 3:

w/Rhy. Fig. 1 (Gtr. 1, 2 times)

A ES/A A ES/A D E E(type 2)

why are you a - lone - wast - ing - your time - when

A ES/A A ES/A D E E(type 2)

you could be with me - wast - ing - your time? - Well, I'm -

w/Rhy. Fig. 2 (Gtr. 2)

D E E(type 2) D E

- a waste like you, - with noth - ing else to do. -

E(type 2) D5 A5 E5

- May I waste your - time too?

E(type 2) E5 E(type 2) D A5(type 2) E(type 3)

May I waste your - time too?

D A5(type 2) E(type 3)

May I waste your - time too?

D5 A5 E5

May I waste your - time too?

Verse 2:
 Warding off regrets,
 Wasting your time.
 Smoking cigarettes,
 Wasting your time.
 I'm just a parasite
 Wasting your time.
 Applying myself to
 Wasting your time.
 (To Bridge:)

WHEN I COME AROUND

All gtrs. tune down 1/2 step:

⑥ = E♭ ③ = G♭

⑤ = A♭ ② = B♭

④ = D♭ ① = E♭

Words by
BILLIE JOE

Music by
BILLIE JOE,

TRÉ COOL and MIKE DIRNT

Moderately ♩ = 100

Intro: Gtr. 1

Intro: Gtr. 1

G5 D5 E5 Em E5 C G5 Rhy. Fig. 1 D5

f P.M. - - 1 P.M. - - - - - 1 P.M. - - - - - 1 P.M. P.M. P.M. - - - - - 1 P.M. - -

The Intro section consists of two lines of music. The first line is a guitar melody in treble clef with a key signature of one sharp (F#) and a 4/4 time signature. It starts with a forte (f) dynamic and features a series of chords: G5, D5, E5, Em, E5, C, G5, and D5. The second line is a guitar tablature for the same melody, with fret numbers indicated below the strings. Chord diagrams are provided above the tablature for each chord.

(end Rhy. Fig. 1) Rhy. Fig. 2

(end Rhy. Fig. 1) Rhy. Fig. 2

E5 Em E5 C D5 G5 D5 E5 Em E5 C (end Rhy. Fig. 2) D5

- 1 P.M. - - 1 P.M. - - 1 P.M. - - - - - 1 P.M. - - - - - 1 P.M. P.M. - - 1

This section continues the guitar melody from the Intro. It features a series of chords: E5, Em, E5, C, D5, G5, D5, E5, Em, E5, C, and D5. The notation includes a treble clef, a key signature of one sharp, and a 4/4 time signature. Chord diagrams and fret numbers are provided for each chord.

Verse:

w/Rhy. Fig. 2 (Gtr. 1, 7 times)

G5 D5 E5 Em E5 C D5 G5 D5

1. I heard you cry - in' loud — all the way — a-cross town —

2. See additional lyrics

E5 Em E5 C D5 G5 D5 E5 Em E5 C D5

— You've been search - ing for that some - one, and it's me, — out on the prowl. — As

G5 D5 E5 Em E5 C D5 G5 D5

you sit a-round feel - ing sor - ry for your - self, — well, don't get lone - ly now —

E5 Em E5 C D5 G5 D5 E5 Em E5 C D5

— and dry your whin - ing eyes. — I'm just roam -

The Verse section features a vocal melody and guitar accompaniment. The guitar part uses the same rhythm as the Intro and Rhythm Figure 2. The lyrics are: "1. I heard you cry - in' loud — all the way — a-cross town — 2. See additional lyrics". The second line of music has the lyrics: "You've been search - ing for that some - one, and it's me, — out on the prowl. — As". The third line has: "you sit a-round feel - ing sor - ry for your - self, — well, don't get lone - ly now —". The fourth line has: "— and dry your whin - ing eyes. — I'm just roam -".

G5 D5 E5 Em E5 C D5

ing for the mo - ment sleaz - ing my back yard, so don't get so

G5 D5 E5 Em E5 C

up-tight, you been think - ing a - bout ditch - ing me. —

Chorus:
A5

No time to search the

Gr. 1 Rhy. Fig. 3

P.M. -4 P.M. -----4 P.M. ----4 P.M.

TAB

C A5 C

world a - round 'cause you know where I'll be found when I come a-round_

(end Rhy. Fig. 3)

TAB

w/Rhy. Fig. 1 (Gr. 1) w/Rhy. Fig. 2 (Gr. 1)

G5 D5 E5 Em E5 C G5 D5 E5 Em E5 C D5

Guitar Solo:
w/Rhy. Fig. 2 (Gr. 1, 2 times)

2. E5 Em E5 C D5 G5 D5 E5 Em E5 C D5

Oooh!

Gr. 2

f hold

TAB

G5 D5 E5 Em E5 C D5

3 3 3 5 5 5 5 3 3 3 3 3

0 0 0 0 0 0 0 0 0 0 0 0

4 5 5 5 (15)

(12)

Chorus:

w/Rhy. Fig. 3 (Gtr. 1)

A5 C A5

No time to search the world a - round, 'cause you know, where I'll be

w/Rhy. Fig. 1 (Gtr. 1)

C E E5 E5 G5 D5 E5 Em E5 C

found when I come a - round. Oh, when I come a - round.

w/Rhy. Fig. 2 (Gtr. 1, 2 times)

G5 D5 E5 Em E5 C D5 G5 D5

Oh, when I come a - round.

E5 Em E5 C

D5 G5

D5

E5 Em E5 C

When I come a - round.

Gtr. 1

P.M. ---4

P.M. -----4

P.M. -----4

P.M.

5 5 5 5 5 7 7 7 7 7 5 5 7 7 7 5 7 7 7 5

Verse 2:

I heard it all before,
 So don't knock down my door.
 I'm a loser and a user so
 I don't need no accuser
 To try and slag me down, because I
 Know you're right.
 So go do what you like.
 Make sure you do it wise.
 You may find out that your
 Self-doubt means nothing was ever there.
 You can't go forcing something
 If it's just not right.

(To Chorus:)

COMING CLEAN

Words by
BILLIE JOE

Music by
BILLIE JOE,
TRÉ COOL and MIKE DIRNT

All gtrs. tune down 1/2 step:

- ⑥ = E♭ ③ = G♭
⑤ = A♭ ② = B♭
④ = D♭ ① = E♭



Moderately fast ♩ = 172

Verse: B5

*Gtr. 1



1. Sev - en - teen, and strung - out - on - con - fu - sion.
2. See additional lyrics

*Gtr. 1 Fig. Verse 1 only

Verses 2 & 3 w/Rhy. Fig. 1

Rhy. Fig. 1

B5



Trapped in - side a roll - of - dis - il -

G#5

(end Rhy. Fig. 1)

Rhy. Fig. 2

F#5



lu - sion.

I found out what it takes -

E5

E5(type 2)

(end Rhy. Fig. 2)



to - be - a man. -

Now,

To Coda ⊕

F#5

E5

1.

E



Mom, and Dad will nev - er - un - der - stand. -

what's hap - pen - ing - to ___

Guitar Solo:

w/Rhy. Fig. 1 (Gtr. 1, 2 times)

me.

Gtr. 2

TAB

7	x	4	4	4	x	4	x	6	x	4	4	6	4	0	4	x	5	4	x	4
4	x	4	4	x	4	4	x	4	x	4	4	4	4	0	4	x	4	4	x	4
4	x	4	4	x	4	4	x	4	x	4	4	4	4	0	4	x	6	6	6	4

B5

TAB

x	4	x	5	4	4	4	7	x	4	4	x	4	x	6	x	4	4	6	4	0
x	4	x	4	4	4	4	4	x	4	4	x	4	x	4	x	4	4	4	4	0
x	6	x	6	6	6	6	4	x	4	4	x	4	x	4	x	4	4	4	4	0

G#5

w/Rhy. Fig. 2 (Gtr. 1, 2 times)

F#5

TAB

4	x	5	4	x	4	x	4	x	5	4	4	4	3	4	4	6
4	x	4	4	x	4	x	4	x	4	4	4	4	4	4	4	4
6	x	6	6	x	4	x	6	x	6	6	6	6	4	4	4	4

E5

T	(6)	4	4	4	6	4	4		0	0	0	0	0	0	0	0	0	0
A		4	4	4	4	4	4		1	1	1	1	1	1	1	1	1	1
B									2	2	2	2	2	2	2	2	2	2
									0	0	0	0	0	0	0	0	0	0

F#5 E5 D.C. al Coda Sev-

T	3	4	4	6	(6)	4	4	4	6	4	4		0	0	0	0	0	0
A		4	4	4		4	4	4	4	4	4		0	0	0	0	0	0
B													2	2	2	2	2	2
													0	0	0	0	0	0

⊕ Coda E B5

what's hap-pen-ing to me.

Verse 2:

Secrets collecting dust but never forget.
 Skeletons come to life in my closet.
 I found out what it takes to be a man.
 Now, Mom and Dad will never understand
 What's happening to me.

(To Guitar Solo:)

Verse 3:

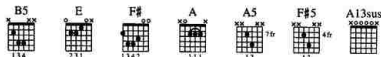
Seventeen and coming clean for the first time.
 I finally figured out myself for the first time.
 I found out what it takes to be a man.
 Now, Mom and Dad will never understand
 What's happened to me.

(To Coda)

EMENIUS SLEEPUS

Words by
MIKE DIRNT

Music by
BILLIE JOE,
TRÉ COOL and MIKE DIRNT



All gtrs. tune down 1/2 step:

- ⑥ = E \flat ③ = G \flat
 ⑤ = A \flat ② = B \flat
 ④ = D \flat ① = E \flat

Moderately fast $\text{♩} = 180$

Rhy. Fig. 1

Intro: Gtr. 1 γ \dot{z}

B5 E B5 E B5 E

Verse:

A F# (end Rhy. Fig. 1) B5 E B5 E

w/Rhy. Fig. 1 (Gtr. 1, 2 times)

1. I saw my friend the other day.
2. See additional lyrics

B5 E A F# B5 E

and I don't know exactly just

B5 E B5 E A F#

what he became. It does-n't show...

Chorus:

E F# E F#

Real-ly was-n't long ago that I was just like you

E F#

and now I think I'm sick and I want to go

Rhy. Fig. 2

B5 E B5 F# B5 E To Coda

home.

1. A F# (end Rhy. Fig. 2) | 2. A F# B5 E

B5 F# B5 E A F# B5

Bridge:

An - y - bod - y ev - er say no?

Gtr. 2

hold -----
0 0 2

Ev - er tell you that you weren't right?

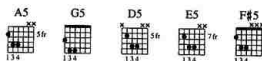
(hold) -----

(2) (2)

IN THE END

Words by
BILLIE JOE

Music by
BILLIE JOE,
TRÉ COOL and MIKE DIRNT



All gtrs. tune down 1/2 step:

⑥ = E \flat ③ = G \flat

⑤ = A \flat ② = B \flat

④ = D \flat ① = E \flat

Verses 1 & 2:

Rhy. Fig. 1

Very fast $\text{♩} = 240$

*Gtr. 1 (end Rhy. Fig. 1)

1. All brawn and no brains and
2. long will he last be fore

*2 Gtrs. arr. for 1

Gtr. 1 cont. Rhy. Fig. 1 sim. (7 times)

all those nice things, yeah, you fi - nal - ly got what you
he's a creep in the past and you're a lone once a

want gain. Will you Some - one to look good with,
pop up a gain and

and light your cig - a - rette. Is this what you real - ly that
be my spe - cial friend 'til the end, and when will that

Chorus:

Gtr. 1 cont. Rhy. Fig. 1 sim. (3 1/2 times)

want? be? I fig - ured out what you're all a

bout and I don't think I like what I see.

w/Rhy. Fig. 1 (Gtr. 1 sim. 4 times)
D5

So, I hope I won't be there in the end if

A5 G5 A5 G5 To Coda ⊕

you come a - round. How

w/Rhy. Fig. 1 (Gtr. 1 sim.)
A5 G5 A5 G5 (Cont. in notation)

Interlude:

Gtr. 1 Riff A
N.C.(A) (G5) (end Riff A) w/Riff A (Gtr. 1) (A) Gtr. 2
G5

T
A
B

5 4 5 3 5 3 0

w/Riff A (Gtr. 1, 12 times)
(A7) (G5) (A7) (G) Play 6 times (Cont. in slashes)

T
A
B

(0) (0) 0 (0) (0)

A5 D.S. al Coda

⊕ Coda A5 G5 A5

F.O.D.

Words by
BILLIE JOE
Music by
BILLIE JOE,
TRÉ COOL and MIKE DIRNT

All gtrs. tune down 1/2 step:

⑥ = E♭ ③ = C♭

⑤ = A♭ ② = B♭

④ = D♭ ① = E♭



Moderately fast ♩ = 164

Verse:

Rhy. Fig. 1

Gtr. 1 (Acoustic) A5



1. Some - thing's on my mind, ... it's been for quite some time. .

2. See additional lyrics



This time I'm on to you. .



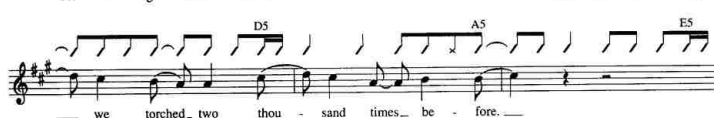
So where's the oth - er face? .



The face I heard be - fore. . Your head trip's



bor - ing me. . Let's nuke the bridge. .



we torched two thou - sand times be - fore. .



This time we'll blast it all to hell. .

Pre-Chorus:

E5 Rhy. Fig. 2

w/Rhy. Fig. 2 (Gtr. 1)

E5 G5 D5 A5

I've had this burn - ing in my guts now for so long.

E5 G5 D5

My bel-ly's ach - ing now to say.

1. 2. Stuck

2. Gtr. 2 D5 C#5 A5 ff

To say...

Gtr. 1

T	7	7	7	7	7	7	7	7	7	7	7	7
A	5	5	5	5	5	5	5	5	5	5	5	5
B												

Chorus:

Rhy. Fig. 3 D5 C#5 G5 D5 C#5 A5 D5 C#5 G5 (end Rhy. Fig. 3) D5 C#5 A5

w/Rhy. Fig. 3 (Gtr. 2) D5 C#5 G5 D5 C#5 A5 D5 C#5 G5 D5 C#5 A5

You're just a fuck. I can't ex-plain it 'cause I think you suck.

D5 C#5 G5 D5 C#5 A5 D5 C#5 G5

I'm tak - ing pride in tell-ing you to fuck off and die.

Pre-Chorus:

w/Rhy. Fig. 2 (Gtr. 2) E5 G5 D5 A5

I've had this burn - ing in my guts now for so long.

E5 G5 D5

My bel - ly's ach - ing now — to — say. —

E5 G5 D5 A5

I'm tak-ing plea - sure in — the doubts — I've passed to you. —

E5 G5 D5 C#5 A5

So lis-ten up — as you — bite — this. —

Chorus:

w/Rhy. Fig. 3 (Gtr. 2, 3 times)

D5 C#5 G5 D5 C#5 A5 D5 C#5 G5 D5 C#5 A5

You're just a fuck I can't ex-plain it 'cause I think you suck.

D5 C#5 G5 D5 C#5 A5 D5 C#5 G5 D5 C#5 A5

I'm tak - ing pride in tell-ing you to fuck off — and die. —

D5 C#5 G5 D5 C#5 A5 D5 G#5 G5 D5 G#5 A5

Good night. —

Gtr. 2 D5 C#5 G5 D5 C#5 A5 D5 C#5 G5

Verse 2:

Stuck down in a rut of
Dislogic and smut,
A side of you well hid.
When it's all said and done,
It's real and it's been fun.
But was it all real fun?

(To Chorus:)

ALL BY MYSELF

Words by
BILLIE JOE

Music by
BILLIE JOE,
TRÉ COOL and MIKE DIRNT

Moderately, $\text{♩} = 120$ (Triplet feel $\text{♩} = \text{♩}^3$)

Intro:

Intro: D G5 D G5

I was a -
(end Rhy. Fig. 1)

Gtr. 1 Rhy. Fig. 1
(Acoustic)

mf hold ----- 4 hold ----- 4 hold ----- 4 hold ----- 4

TAB

Verse 1:

w/Rhy. Fig. 1 (Gtr. 1, 2½ times)

lone. I was all by my - self.

No one was look - ing, I was think - ' of

you. Oh yeah, did I men - tion

I was all by my - self? All by my -

w/Rhy. Fig. 2

TAB

E A5 E

self. All by my - self.
(end Rhy. Fig. 2)

TAB: 4 5 4 5 4 5 4 5 | 5 5 5 5 5 5 5 5 | 4 5 4 5 4 5 4 5

0 0

A5 E A5

All by my - self. 2. I went to your

TAB: 5 5 5 5 5 5 5 5 | 4 5 4 5 4 5 4 5 | 5 5 5 5 5

0 0

Verse 2:

w/Rhy. Fig. 1 (Gtr. 1, 2 times)

D G5 D G5

house, but no one was there. I went to your

room. I was all by my - self.

TAB: 5 5 5 5 5 5 5 5 | 4 5 4 5 4 5 4 5 | 5 5 5 5 5

0 0

w/Rhy. Fig. 2 (Gtr. 1, 1½ times)

E A5 E A5

You and me had such won-der-ful times _____ when I'm all by my -

self, all by my - self.

Gtr. 1.

TAB: 4 5 4 5 4 5 4 5 | 5 5 5 5 5

0 0 0



Burnout
 Having A Blast
 Chump
 Longueux
 Welcome To Paradise
 Pulling Teeth
 Basket Case
 She
 Sassafras Roots
 When I Come Around
 Coming Clean
 Emanuel Sleepus
 In the End
 F.O.D.
 All By Myself



WARNER BROS. PUBLICATIONS INC.
 15800 N.W. 48th Avenue • Miami, Florida 33014
 A Warner Music Group Company



\$18.95
 In USA
 GF0663