

CAN U HELP ME

Words and Music by JAMES SAMUEL HARRIS III,
TERRY LEWIS and USHER RAYMOND

Moderately slow, in 2

mp

Bbm7 Ab Eb Bbm7 Ab

Eb Bbm7 Ab Eb

Ab Eb Fm7

Liv - ing on the edge, out of con - trol, and the
Girl, I put your love up on the shelf and I

Db Eb Ab5 Fm11

world just won't let me slow down. But in my big - gest pic - ture was a
guess I just left it to die. And now we're not to - geth - er, 'cause I

Db



Eb



3fr

Ab5



4fr

Eb/G



3fr

pho - to of you _____ and me. _____ Girl, you know I try. I
 _____ hurt you too _____ man - y times. _____ And now you're not a - round. I

Gb6/9



8fr

Db



Eb



3fr

Fm



Eb/G



3fr

work hard to pro - vide all the ma - ter - i - al things _____ that I thought _____ would make you hap - py. _____
 wish, for ev - 'ry mo - ment of time _____ that got wast - ed, we used _____ it to make sweet _____ love. _____

Ab



4fr

Bbm7



Ab



4fr

Eb



3fr

_____ I'm con - fused; can you _____ make me un - der - stand? 'Cause I
 _____ Ba - by, be my guide; _____ please _____ take my hand. _____ Want you to

Bbm7



Ab



4fr

Eb



3fr

Gbsus2



9fr

Db/F



try to give _____ you the best of me. I thought we were cool; _____ may - be I
 know that I've got _____ you _____ if you need it. Don't wan - na be on the out - side _____ look -

Eb

Db

Eb5

was blind, but nev - er took time to see. Will you
 in' in. I got-ta have you, girl, can't you see? }

(cluster)
8vb

Fm9

Eb/G

Db(add9)

Eb

help me? Tell me what you want from me. Can you

Fm9

Eb/G

Db(add9)

Ab/C

help me? Tell me why you wan - na leave. Ba - by,

Fm9

Eb/G

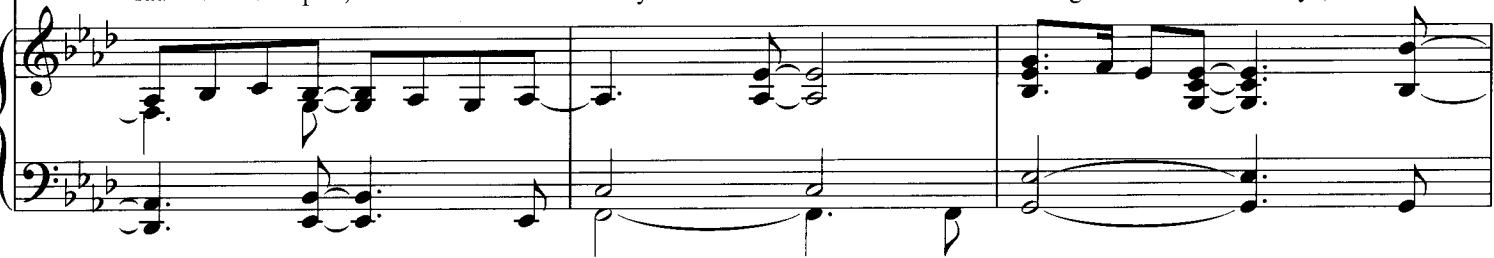
Ab

Db

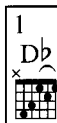
{ help me. With - out you, my whole world is
 help me, 'cause with - out you, my whole world is



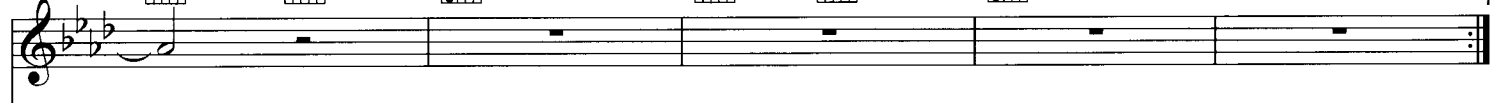
fall - in' a - part — and I'm go - in' — cra - zy. — } Life's —
 fall - in' a - part, — and with - out — you I — think I'll — go cra - zy. }


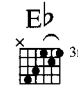

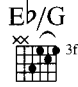



— a pris - on when you're in love — a - lone. — (Oh girl, I love —






need you to come back home. I don't wan - na be a - lone. —
 — you. You know I need — you.)

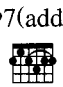


2     

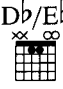

I don't wan - na be a - lone. 7 Take — me, would you — please? —
 — you.

(Please stay. Don't go. I don't want it to be o - ver. 3 Give me an - oth - er chance. — I wan - na be —



— your man. Girl, you've got me down here on my knees, cry - in',

beg - gin', — plead - in'. I'll do an - y - thing for your love.



N.C.



Whoa.

Would you

help

E/G#

D

E

F#m9

me?

Tell me — what you want from me.

Can you help

E/G#

D

A/C#

F#m9

me

and tell me — why you wan - na leave?

Ba - by, help

E/G#

A

D

E

me.

With - out — you my — whole world is fall - in' a - part, — and with - out —



— you, girl, I'm go - ing cra - zy. Life's — a pris - on with -



- out your love. Can you help me? — Tell me why, why why, (Why, why why,



why, why, why. Can you help me? Girl, I'll nev - er stop, 'cause you're why, why, why?) help me? (Please stay, don't go. —



all I've got. Will you help me? Help me un - der - stand why I can't be a - lone.)

Fsus



Gm



F/A



Bb(add9)



be your man. It's driv-ing me cra - zy. (Cra - zy, cra - zy, cra - zy.

Eb



F



Gm7



Eb



F



(Ooh, girl, I love__ you.
Lead vocal ad lib.

Gm7



Eb



F



Gm7



Eb



F



Play 4 times

(You know I need__ you.) (Can't live with - out__ you, ba - by.

Gm7



Eb



Fsus



Gm7



(Ooh, girl, I need__ you.)