

BEAUTIFUL

from Christina Aguilera's STRIPPED

Words and Music by
LINDA PERRY

Gentle Ballad (♩ = 78)

Chord diagrams: Eb, Eb7/Db, Cm7, Abm6/Cb

Chord diagrams: Eb, Eb7/Db, Cm7, Abm6/Cb

Chord diagrams: Eb, Eb7/Db, Cm7

Ev-'ry-day _____ is so won - der-ful, _____ then sud-den - ly, _____ it's hard to breathe. _

Chord diagrams: Abm6/Cb, Eb, Eb7/Db

Now and then _____ I get in - se-cure, _____ from all the pain, _

 Cm7
  Abm6/Cb
  Ab

I'm so a - shamed. I am beau - ti - ful — no
 You are beau - ti - ful — no

 Fm7
  Eb
  Eb/Db
  Cm7

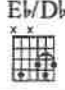

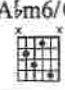
mat - ter what they say — Words can't bring me — down —
 mat - ter what they say — Words can't bring you — down —

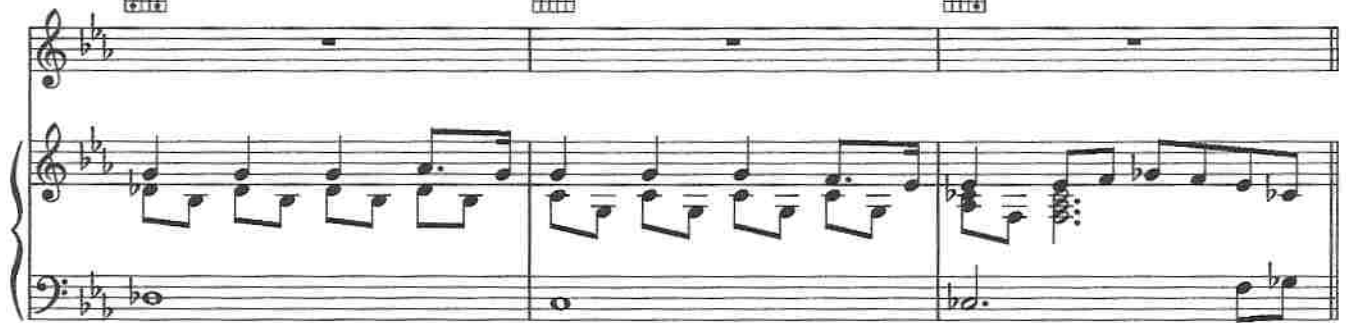
 Ab
  Fm7
  Eb
  Eb/Db

I am beau - ti - ful — in ev - ry sin - gle way — Yes words can't bring me — down —
 'Cause you are beau - ti - ful — in ev - ry sin - gle way — Yes words can't bring you — down —

 Cm7
  Fm7
 To Coda  Eb

So don't you bring me down — to - day.
 So don't you bring me down — to - day.

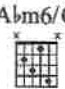
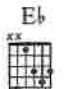







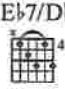
To all your friends — you're de - lir - i-ous So con - sumed — in all your —




— doom — Try - ing hard — to fill the

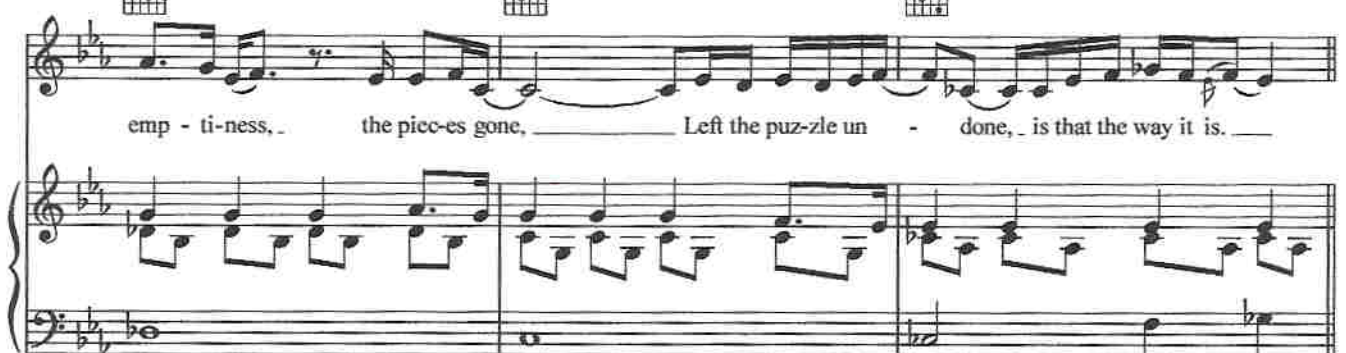


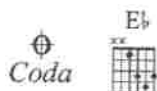




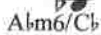
emp - ti-ness, the picc-es gone, Left the puz-zle un - done, is that the way it is. —

D.S.  al Coda





No mat - ter what we do, _____ No mat - ter what we say, _____



mat - ter what we say _____ Yeah _____ Oh, _____
We're the song in - side the tune, _____ full of beau - ti - ful mis - takes



And ev - 'ry - where we go, _____ the sun will al - ways shine.



the Sun will al - ways al - ways shine.
And to - mor - row we might a - wake _____ on the oth - er side.



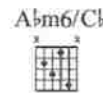
'Cause we are beau-ti-ful — no mat-ter what . they say . Yes words won't bring us — down, —



We are beau-ti-ful — in ev-'ry sin - gle way . Yes



words can't bring us down — So don't you bring me down — to-



day. Don't you bring me down . to -

6

E \flat



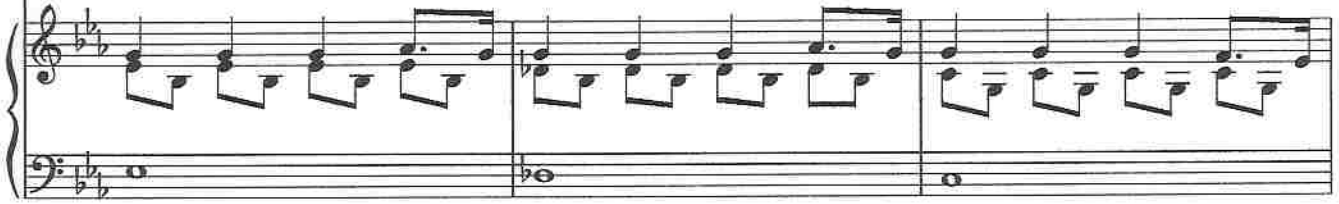
E \flat 7/D \flat



Cm7



day.



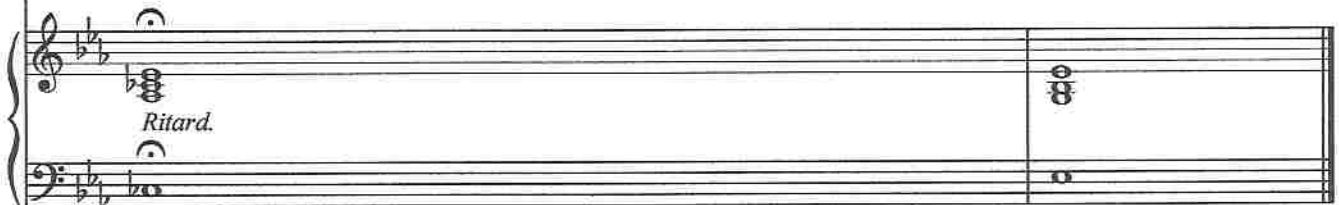
A \flat m6/C \flat



E \flat



Don't you bring me down - mm - hmm to - day.



Ritard.