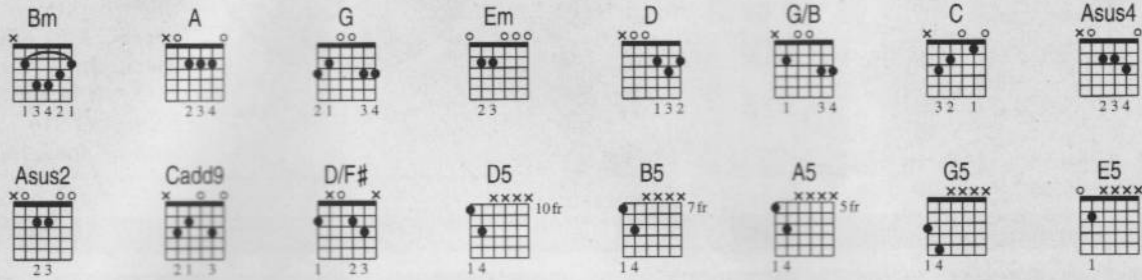


"COMFORTABLY NUMB"

As heard on **The Wall** (CAPITOL)

Words and Music by ROGER WATERS and DAVID GILMOUR • Transcribed by JIMMY BROWN

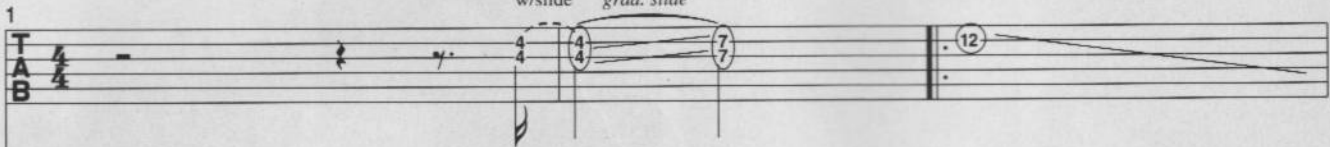


A Intro (0:00)

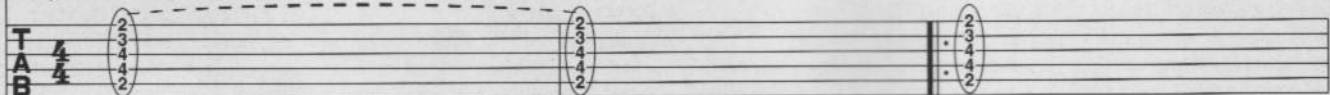
Slowly ♩ = 65

Bm

Gtr. 1 (clean elec. w/dark tone and long echo repeats)

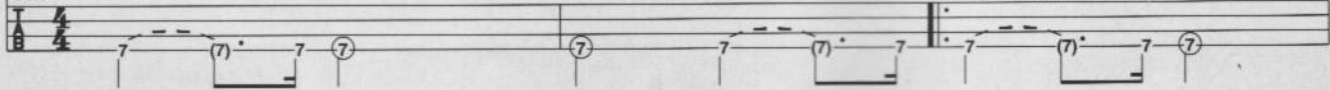


String section arr. for gtr.



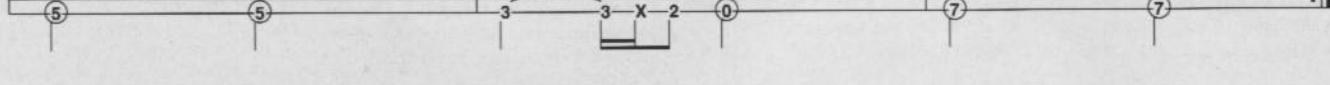
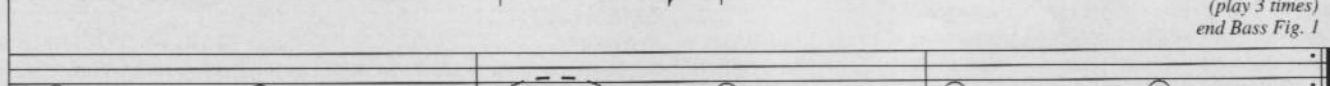
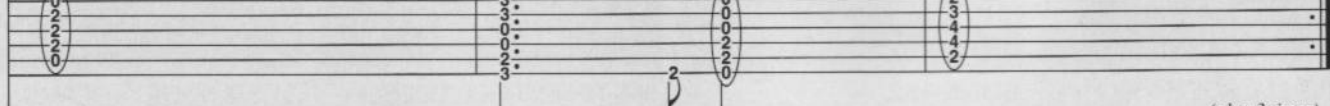
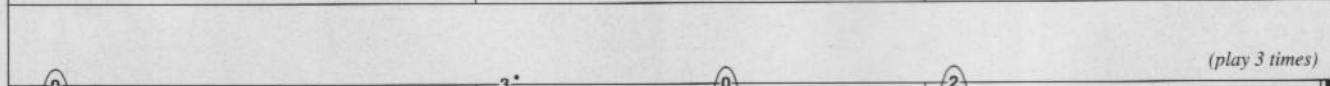
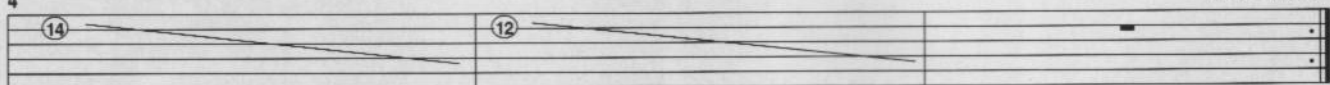
Bass

Bass. Fig. 1



in there feeling mation first Just nod if you can down Well hear me I Just the basic ease your pain facts and get you Can you Is there anyone on show me home your feet where it hurts again

A G Em Bm (play 3 times)



"COMFORTABLY NUMB"

C Pre-chorus (0:53, 3:17)

There is no pain you are receding

A distant ship smoke on the ho-

D
String Section arr. for gtr.
Orch. Fig. 1
let ring

*Gtr. 2 ("high-strung" acous. gtr. arr. for standard tuning)
Rhy. Fig. 1

**repeat previous chord

*Acoustic guitar part originally performed in David Gilmour's "high-strung" tuning: low E string replaced by a thinner string tuned two octaves higher; A, D and G strings replaced by thinner strings tuned one octave higher.

Bass
Bass Fig. 2

rizon

You are only coming through in waves

Your

lips move but I can't hear what you're saying

When I

C

G

end Orch. Fig. 1

end Rhy. Fig. 1

end Bass Fig. 2

"COMFORTABLY NUMB"

(1.) was a child I had a fever My hands felt just like two balloons
 (2.) was a child I caught a fleeting glimpse out of the corner of my eye

15
 D Gtr. 2
 Strings repeat Orch. Fig. 1 (see bar 7)
 Bass repeats plays Bass Fig. 2 (see bar 7)

18
 A G/B C G
 Now I've got that feeling once again I can't explain You would not
 I turned to look but it was gone I cannot put my finger on

21
 C G Asus4 Asus2 A G/B Cadd9 G
 I understand This is not how I am I have become comfortably
 it now The child is grown The dream is gone have become comfortably

D 1st and 3rd Choruses (1:54, 4:17) (2nd time) skip ahead to **H**

Rhy. Fig. 2
 Bass plays Bass Fig. 3 (see below)

E Guitar Solo (2:05)

25
 Gtr. 2
 Gtr. 3 (elec. w/dist.)
 D D A
 end Rhy. Fig. 2 Gtr. 2 plays Rhy. Fig. 1 (see bar 7)

Bass plays Bass Fig. 2 simile (see bar 7)

28
 D A G/B C
 Gtr. 3
 w/bar 1/2 full w/bar 1/4

31
 G C G
 grad. bend 1/2 1/4

Bass Fig. 3 (1:54, 2:35, 4:17)

Asus4 Asus2 A G/B Csus2 G5 D

"COMFORTABLY NUMB"

F 2nd Chorus (2:35)

1
 have become comfortably numb
 Asus4 Asus2 A G/B Cadd9 G D

Gtr. 2 plays Rhy. Fig. 2 (see bar 23)

Bass plays Bass Fig. 3 simile (see previous page)

G 2nd Verse (2:47)

Okay (okay okay) just a little pin prick There'll be no more ah but you may
 Bm A G D/F# Em

Gtr. 2
 Rhy. Fig. 3

Bass plays Bass Fig. 1 twice simile (see bar 3)

feel a little sick Can you stand up (stand up stand up) I do believe it's working Good That'll keep you
 Bm A

go back to C Pre-chorus

going through the show Come on it's time to go

H (4:25)

numb
 D

45 Gtr. 3

Gtr. 2

Rhy. Fill 1

Gtr. 1 (w/dist., no slide)

Bass plays Bass Fill 1 (see next page) Bass plays Bass Fig. 1 simile until fade (see bar 3)

I Outro Guitar Solo (4:32)

D5

Gtr. 2 repeats Rhy. Fill 1 (see bar 45)

B5

Gtr. 2 plays Rhy. Fig. 3 until fade (see bar 37)

"COMFORTABLY NUMB"

50

B5 (4:48) B5

Bass substitutes Bass Fill 2 (see below)

52

A5 G5 E5 B5

pitch: F#

55 (5:03) B5

A5 slight P.H.

57

G5 E5 B5

Bass Fill 1 (4:29)

Bass Fill 2 (4:44)

(Bm)

"COMFORTABLY NUMB"

(5:18)
B5

59

A5 P.H.

G5

E5

B5

62

full

full

P.M.

1/2

Rhy. Fig. 4

A5

64

G5

E5

B5

end Rhy. Fig. 4

(5:48)
Gtr. 1 plays Rhy. Fig. 4 simile until fade (see bar 63)
Gtr. 3

67

19-21 21

21

21

(21)

(21)

(21)

19-21 19

(19)

X-17 17-17

17

full

full

(17)(17) 15

17

(17)-15-17

3

(6:03)

B5

70

1/4

17 (17) 17-15

16-16 (16)

(16)

X 14 16 16-14

12

14

16

15 16 (16)

16

17-17 (17) 15-17

16

(0)

12

1/2

A5

72

G5

E5

let ring ...

3

B5

74

full