

DON'TCHA WANNA

WORDS & MUSIC BY ANASTACIA, SAM WATTERS, LOUIS BIANCANIELLO, STEVIE WONDER & YVONNE WRIGHT

♩ = 130 (in 2)

4 N.C.

1. If you had the chance, I know you
(Verse 2 see block lyric)

Drums 4 Play optional 8va bassa (both hands)

Detailed description: This system contains the first musical system. It features a vocal line on a treble clef staff and piano accompaniment on two bass clef staves. The key signature has four flats (B-flat major/D-flat minor) and the time signature is 4/4. The tempo is marked as quarter note = 130 in 2. The system includes a repeat sign and a first ending bracket. The lyrics '1. If you had the chance, I know you' are written below the vocal line. A note 'N.C.' is placed above the piano part. A drum part is indicated with 'Drums 4' and the instruction 'Play optional 8va bassa (both hands)'.

sure - ly would. And a - ny - time I want

Detailed description: This system contains the second musical system. It features a vocal line on a treble clef staff and piano accompaniment on two bass clef staves. The lyrics 'sure - ly would. And a - ny - time I want' are written below the vocal line. The piano accompaniment continues with a steady bass line and chords.

it, ba - by, I could.

Detailed description: This system contains the third musical system. It features a vocal line on a treble clef staff and piano accompaniment on two bass clef staves. The lyrics 'it, ba - by, I could.' are written below the vocal line. The piano accompaniment continues with a steady bass line and chords.

© COPYRIGHT 2001 POHO PRODUCTIONS/UNIVERSAL MUSIC CORPORATION/BREAKTHROUGH CREATIONS/
S.M.Y. PUBLISHING/SONY/ATV TUNES LLC/JOBETE MUSIC COMPANY INCORPORATED/BLACK BULL MUSIC INCORPORATED, USA.
SONY/ATV MUSIC PUBLISHING (UK) LIMITED, 10 GREAT MARLBOROUGH STREET, LONDON W1F 7LP /
UNIVERSAL/MCA MUSIC LIMITED, ELSINORE HOUSE, 77 FULHAM PALACE ROAD, LONDON W6 8JA /
JOBETE MUSIC (UK) LIMITED, 127 CHARING CROSS ROAD, LONDON WC2H 0EA.
ALL RIGHTS RESERVED. INTERNATIONAL COPYRIGHT SECURED.

Said you nev - er saw it com - ing, did you dear?

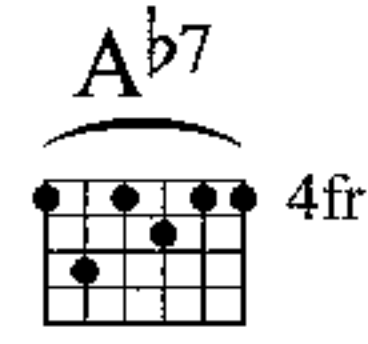
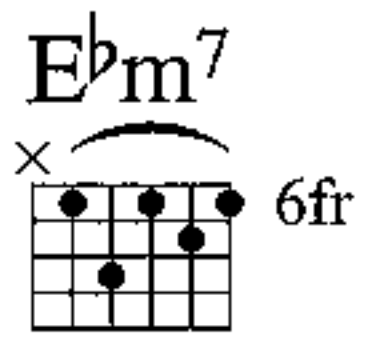
But you can't run from ev - 'ry - thing you fear.

Hey, don't cha wan - na fall in love? Don't cha wan-na, don't cha

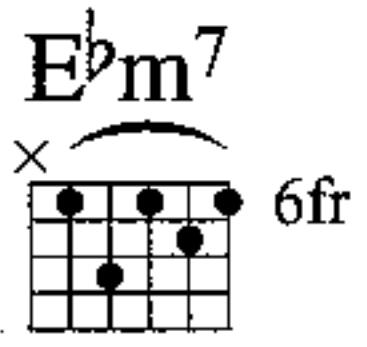
E^bm⁷
6fr

wan - na, don't cha wan - na fall in love with me? (Ba - by, you and I.)

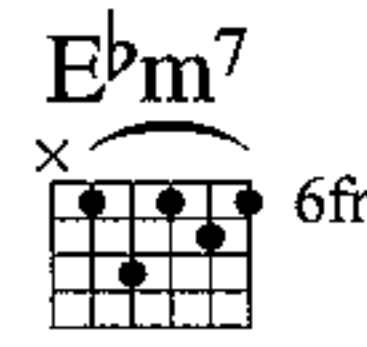
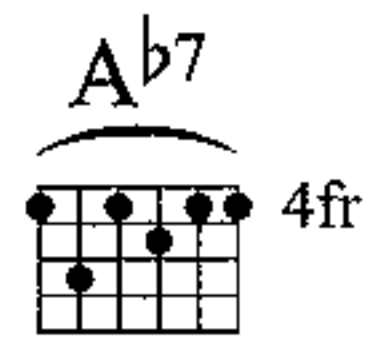
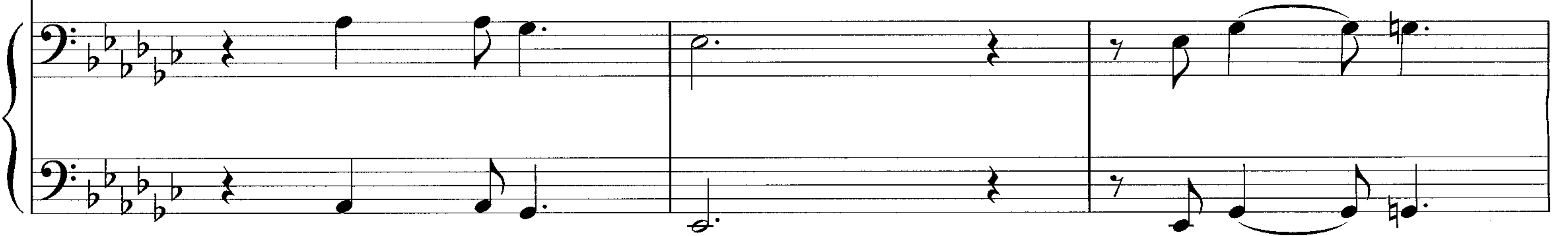
A^b7
4fr



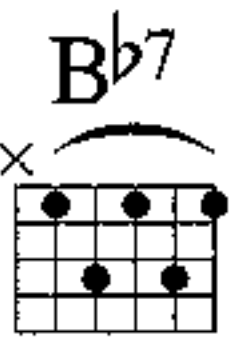
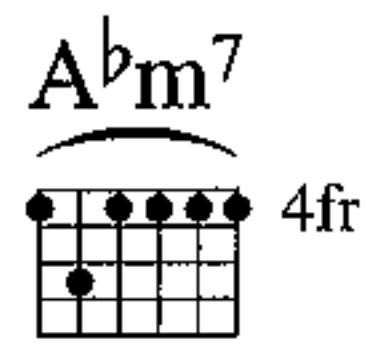
— Don't cha wan - na, don't you wan - na, don't cha wan - na fall in love? — (Why don't cha



push your pre - cious pride_ a - side?)_ Don't cha wan - na, don't cha wan - na, don't cha wan - na fall in



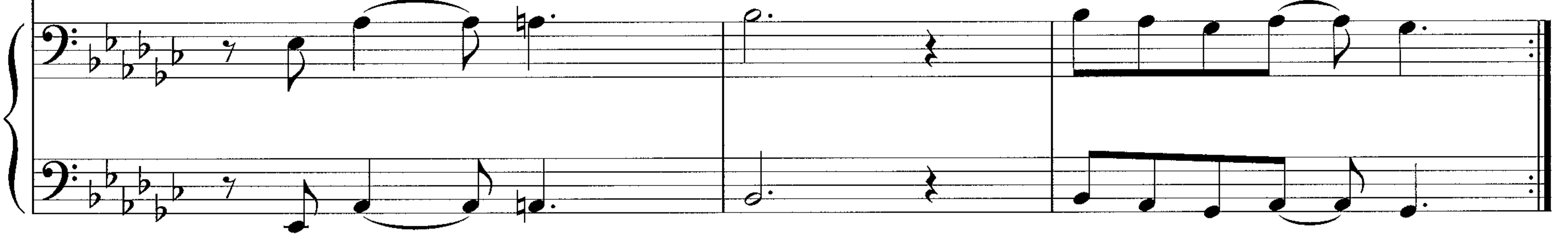
love with me? Don't cha wan - na? 'Cause you can't let_ your whole_



1.
N.C.

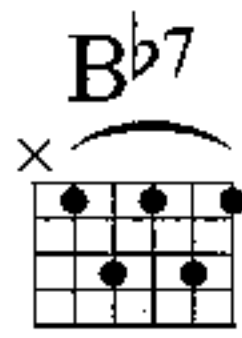
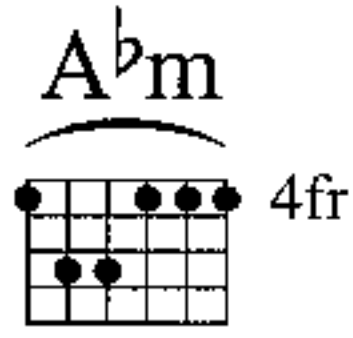


— life pass_ you_ by, oh_



2.

N.C.

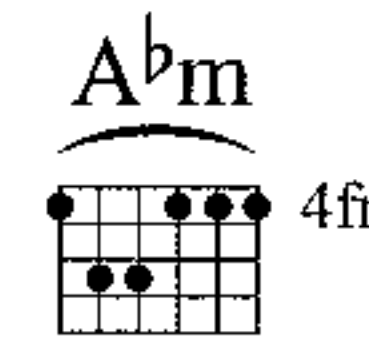
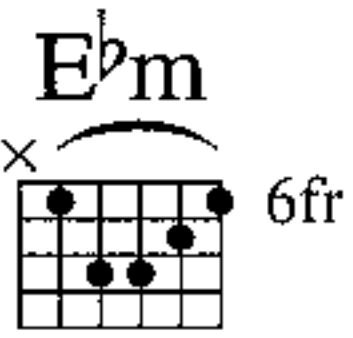


Musical staff with treble clef and key signature of three flats. The melody begins with a whole rest followed by a series of eighth and quarter notes.

You can't put no - thin' be - fore your pride.

(loco)

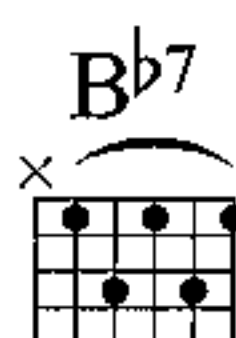
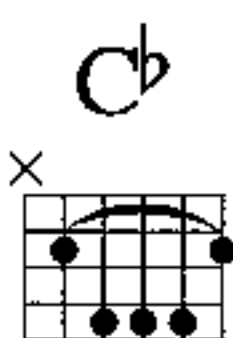
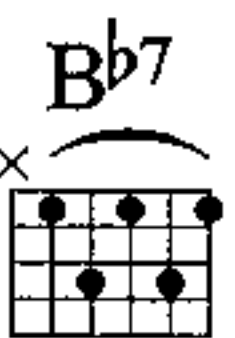
Piano accompaniment for the first system, including bass and grand staves. The bass line features a melodic line in the left hand and a steady bass line in the right hand.



Musical staff with treble clef. The melody continues with eighth and quarter notes, including a measure with a 7 (slide) marking.

(I said no - thin', no - thin'.) But, ba - by, what I give,

Piano accompaniment for the second system, including bass and grand staves. The bass line continues with a melodic line in the left hand and a steady bass line in the right hand.



Musical staff with treble clef. The melody continues with eighth and quarter notes, including a measure with a 7 (slide) marking.

you can lay your pride a - side.

Piano accompaniment for the third system, including bass and grand staves. The bass line continues with a melodic line in the left hand and a steady bass line in the right hand.

N.C.

Musical staff with treble clef. The melody begins with a whole rest followed by a series of eighth and quarter notes.

Ba - by, don't you wan - na fall in love with me 'cause we could

Optional 8va bassa (both hands)

Play 2° only

Piano accompaniment for the fourth system, including bass and grand staves. The bass line continues with a melodic line in the left hand and a steady bass line in the right hand.

take it all night and make you see. But ba - by let me know, don't

D.S. repeat chorus to fade

cha wan - na fall, don't cha wan - na?

Verse 2:
 Sure that you ain't had nothing like this before
 You can be the same if I give any more
 I don't wanna waste none of your precious time
 But you won't have no choice but to be mine
 Baby, don't cha wanna play it on the line?

Don't cha wanna etc.